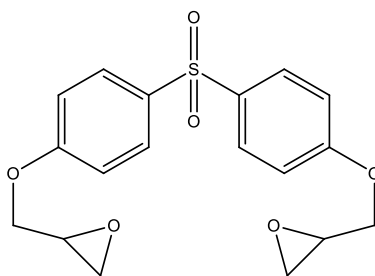
	VISHWA-SYNTHARO PHARMACHEM		Rev: 00
	SPECIFICATIONS		Date: May 2016
	Bisphenol S Diglycidyl ether	BDE	



IUPAC Name:	Bisphenol S diglycidyl ether	Pharmacopeial Standard (if any):	N/A
CAS #:	3878-43-1	Specification based on:	In-house
Formula:	C ₁₈ H ₁₈ O ₆ S	Mol. Wt.:	362.40

	TESTS	SPECIFICATION	TEST METHOD
1.	Appearance	Off-white to white solid	STP-QC-001
2.	Identification		
	Melting Range (°C)	163 - 165° C	STP-QC-006
3.	Purity (by HPLC; % area)	NLT 98 %	HPLC with UV detector
4.	Loss on Drying (% w/w)	NMT 0.5 %	STP-QC-005
5.	Residue on Ignition (% w/w)	NMT 1.0 %	USP <281>
6.	Heavy Metals	NMT 10 ppm	STP-QC-009